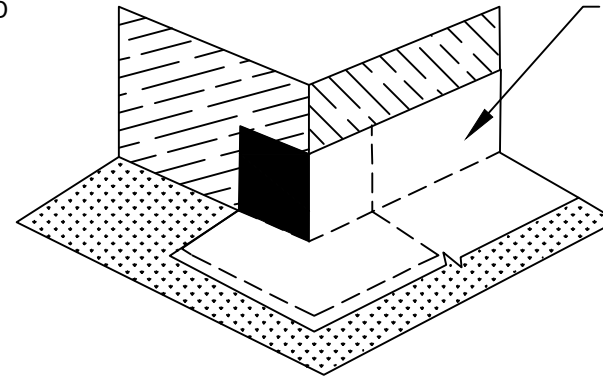
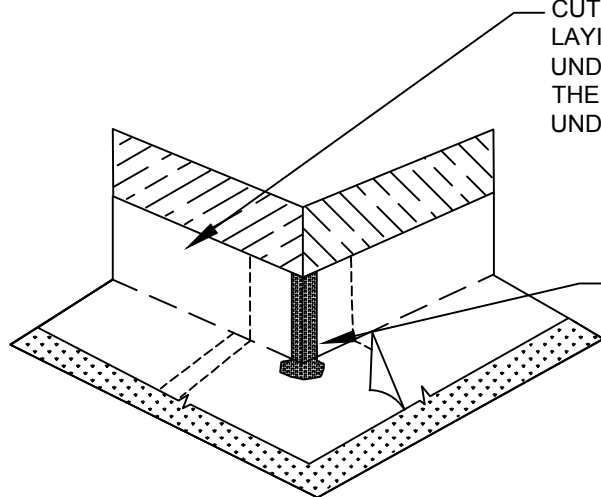


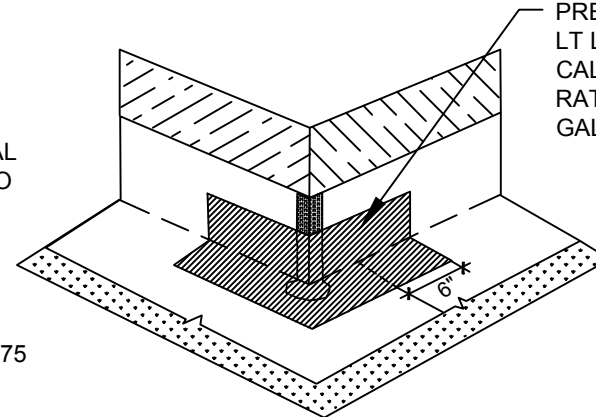
PLACE OUTSIDE CORNER BOOT ONTO CONCRETE FORM ASPHALT SIDE OUT - KEEP CLEAN FOR ADHESION OF UNDERSLAB FIELD APPLIED CORNER PIECES



PLACE FIRST LEG OF UNDERSLAB MEMBRANE VERTICALLY ON FORM - CUT VERTICALLY IN THE CORNER LAYING THE FLAP OF UNDERSLAB MEMBRANE HORIZONTALLY ON TO ASPHALT SIDE OF CORNER BOOT



PLACE SECOND LEG ON OPPOSITE SIDE OF CORNER - CUT VERTICALLY IN THE CORNER LAYING THE FLAP OF UNDERSLAB MEMBRANE ONTO THE PREVIOUS APPLIED UNDERSLAB MEMBRANE



APPLY LM-95 OVER VERTICAL CUTS AT CORNER AND ONTO HORIZONTAL MEMBRANE A MINIMUM OF 2" IN ALL DIRECTIONS - PREPARE FABRIC WITH 650 LT LIQUID ADHESIVE OR CALIFORNIA SEALANT AT A RATE OF 50 - 75 SQ. FT. PER GALLON

APPLY FABRIC TAPE TO INSIDE CORNER AND OVER CURED LM95 A MINIMUM OF 6" BEYOND CUT OF SECOND PIECE OF UNDERSLAB - PREPARE FABRIC WITH 650 LT LIQUID ADHESIVE OR CALIFORNIA SEALANT AT A RATE OF 50 - 75 SQ. FT. PER GALLON

US23

SECTION@ UNDERSLAB OUTSIDE CORNER (FIELD CUT)

© POLYGUARD PRODUCTS, INC.
MATERIAL SEPARATED FOR CLARITY

<p>The information provided is based on data and knowledge considered to be true and accurate and is offered for the users' consideration, investigation and verification, but we do not warrant the results to be obtained. Please read all data sheets, statements, recommendations or suggestions in conjunction with our conditions of sale, which apply to all goods supplied by us.</p>	NOT TO SCALE
	EFFECTIVE DATE: 06/06/2018
	SUPERCEDES: