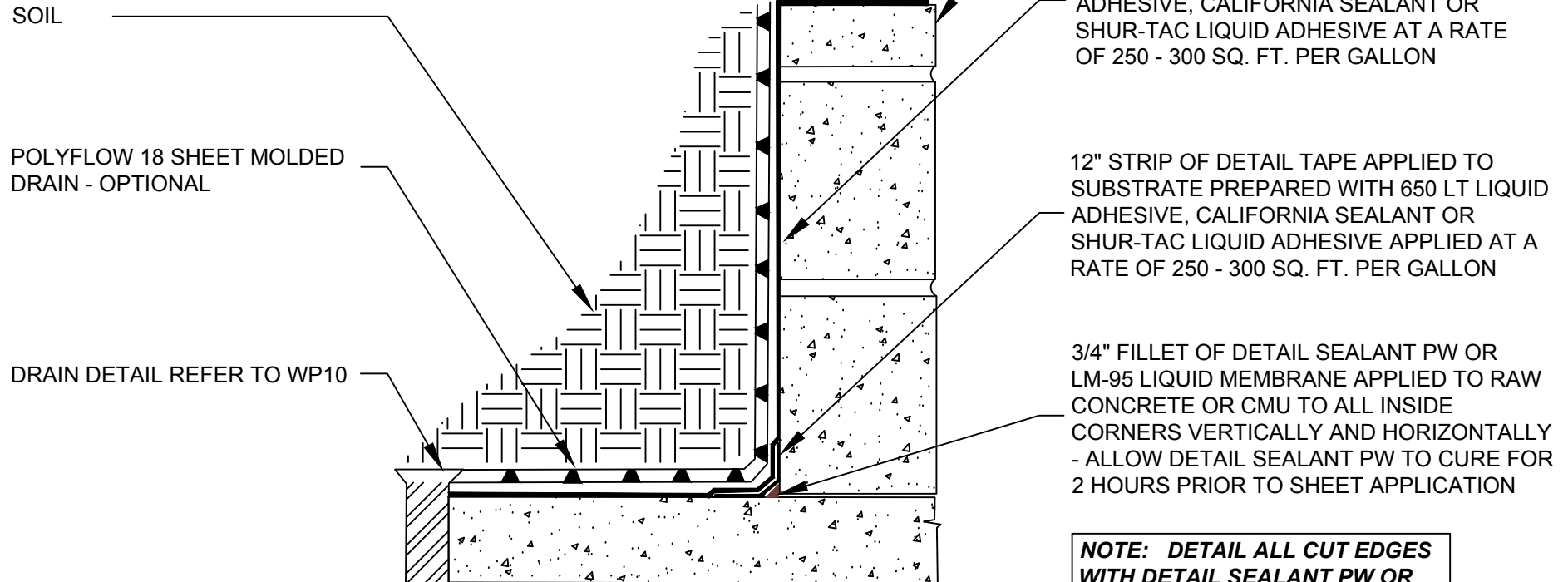


BUILD CMU WALLS WITH JOINTS ON THE WATERPROOFING SIDE STRUCK FLUSH WITH THE FACE OF THE CMU. EITHER PARGE COAT OR PREPARE THE SURFACE WITH A 60 MIL APPLICATION OF COMMERCIAL STRETCH



NOTE: DETAIL ALL CUT EDGES WITH DETAIL SEALANT PW OR LM-95 LIQUID MEMBRANE



SECTION@ Poured Concrete or CMU Planter Waterproofing

SPECIAL NOTE: IF ADHESIVE IS REQUIRED FOR SEAMS OR ENDLAPS DO NOT USE SHUR-TAC LIQUID ADHESIVE

© POLYGUARD PRODUCTS, INC.
MATERIALS SEPARATED FOR CLARITY

Polyguard Products, Inc.
P.O. Box 755 - Ennis, TX 75119
Phone: 214-515-5000 Fax: 972-875-9425
Web Site - www.polyguard.com

<small>The information provided is based on data and knowledge considered to be true and accurate and is offered for the users' consideration, investigation and verification, but we do not warrant the results to be obtained. Please read all data sheets, statements, recommendations or suggestions in conjunction with our conditions of sale, which apply to all goods supplied by us.</small>	NOT TO SCALE
	EFFECTIVE DATE: 11/26/14
	SUPERCEDES: