

Installation Guidelines

Totalflow™ and Polyflow® 10, 10P, 15, 15P Prefabricated Soil Sheet Drain

Required Materials

1. 2' X 50' rolls of Totalflow™ sheet drain.
2. 4' x 50' rolls of Polyflow® 10, 10P, 15, 15P sheet drain, if full wall drainage is required.
3. 3" wide duct tape or similar
4. Attached materials (see below)
5. Knife or scissors
6. Rubber hammer

Drain Attachment Methods

For attaching drain to waterproofing material, concrete or wood, several methods may be used including rounded-edge, metal stick pins; construction adhesives, such as Polyguard Quick Grip Adhesive; or double-sided tape. Discuss adhesive materials compatibility with waterproofing supplier before installation. Typically any method used for attaching waterproofing protection board will work for drain.

Clean Wall/ Waterproof / Insulate

Clean wall and apply waterproofing or insulation (if required).

INSTALLATION

Installing First Row of Drain

(The Totalflow sheet drain row)

The first row of drain to be installed is the Totalflow at the bottom of the wall. The drain should sit on top of the footing with the high-profile part of the drain at the bottom to provide high lateral water flow.

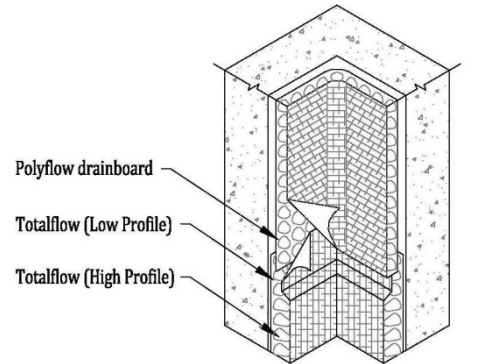
If not using Polyflow 10, 10P 15 or 15P sheet drain for full wall coverage, close the top end of the drain to prevent soil intrusion by folding the fabric behind the drain. Close the high-profile section with 3" underground tape.

Installing Next Row of Flow

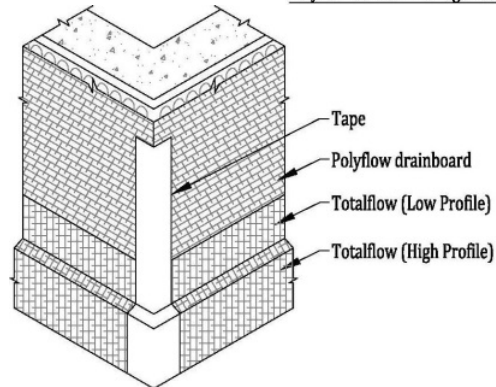
To attach the next roll of Totalflow drain, butt to adjacent roll and tape joint or cut two rows of dimples from previously applied drainage panel. Do not cut fabric. Interlock two rows and secure connection. Overlap fabric and apply 3" wide tape from the top to the bottom of the joint to prevent soil intrusion.

Going Around Corners

Bend drain to make inside corners. For outside corners, cut the low-profile core flush with corner and tape edges. Slit fabric on high-profile section; bend around corner. Apply scrap of fabric and tape in place. Refer to Outside Corner Image.



Polyflow Vertical Drainage Board Inside Corner



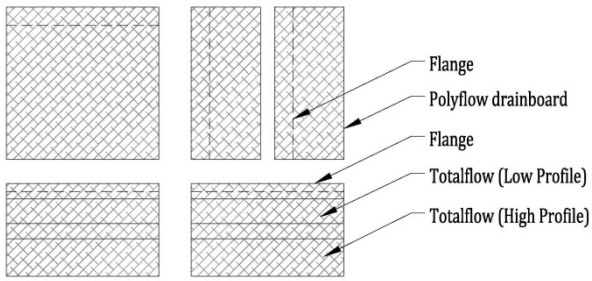
Polyflow Vertical Drainage Board Outside Corner

Connecting Polyflow 10, 10P, 15 or 15P Sheet Drain

If full wall drainage is required, Polyflow 10, 10P, 15 or 15P soil sheet drain is attached above the Totalflow sheet drain. Polyflow 15P sheet drain may be installed either horizontally or vertically.

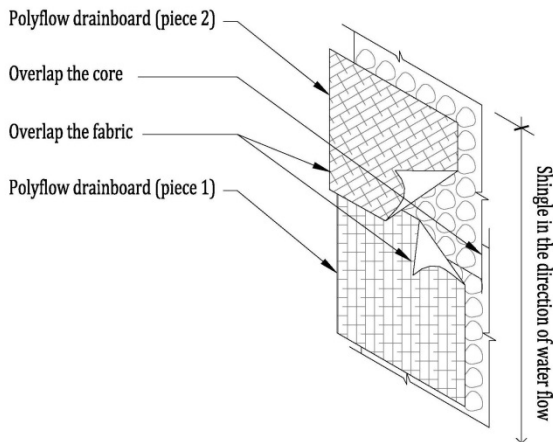
Vertical Wall

When the Polyflow 10, 10P, 15 or 15P sheet drain is installed vertically, face the flange in the direction opposite of the Totalflow water flow. When the Polyflow 10, 10P, 15 or 15P sheet drain is installed horizontally, place the edge of the core with the flange at the top. This flange position, similar to roof shingle applications, minimizes seepage of water behind the drain. Fold back the fabric at the top of the Totalflow sheet drain and place the Polyflow 10, 10P, 15 or 15P sheet drain on top of the Totalflow core flange. Fold fabric from sheet drain section down over the Totalflow section and secure with 3" tape.



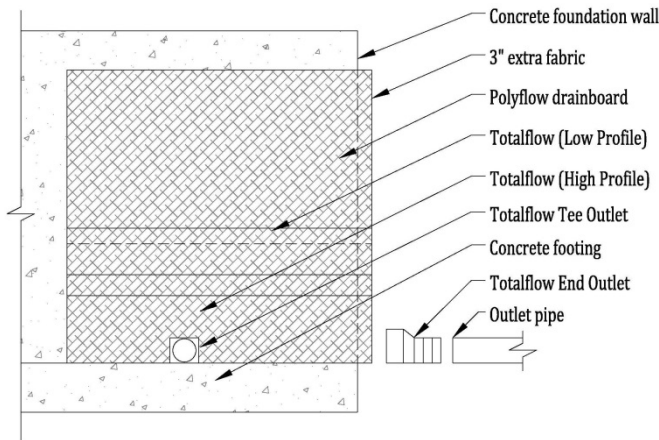
Polyflow Vertical Drainage Board Layout

Attaching Next Roll of Polyflow 10, 10P, 15 or 15P



Polyflow Vertical Drainage Board Overlap

Fold back edge of fabric on lower (or downstream) drain. Do not detach from dimples. Place cones of upper (upstream) drain over flange of lower drain. Overlap fabric of upper drain over lower drain. Seal seam with 3" tape.



Polyflow Vertical Drainage Board Accessories

Retaining Walls

Cut bottom of drain to match bottom of wall (Cut 1/2-inch diameter holes in flat back of core, opposite fabric) at weep locations. DO NOT CUT FABRIC. Place drain on wall fabric toward soil. Tuck extra fabric at downstream edge of core. Attach drain with appropriate attachment method.

Shoring Walls

Place drain with fabric side toward soil to be drained. Cut 1/2" diameter holes on flat back of core at discharge pipe location. DO NOT CUT FABRIC. Concrete or gunnite/shotcrete may be placed directly against the core side of the drain.

Sealing Edges

All edges of drain should have extra fabric tucked behind core edge seal to prevent soil from entering core

For Horizontal Plazas

Place drain with fabric side up. Cut core and fabric to fit tightly around floor drain.

Installation Under Slabs

For under floor slab installation, position Totalflow sheet drain as shown with geotextile to soil side. Waterproofing and/or floor slab can be applied directly to the back of the core.

Quantity To Order

It is suggested that in the absence of exact information on the amount of material required, add 5% to the estimated quantity.

SAFETY

SDS sheets for all Polyguard products can be obtained at our website www.polyguard.com. Call Polyguard Products, Inc. at (214) 515-5000 with questions.

TECHNICAL SERVICES

Technical assistance, information and Polyguard's products are available through a nationwide network of distributors and architectural representatives, or contact Polyguard Products, Inc.

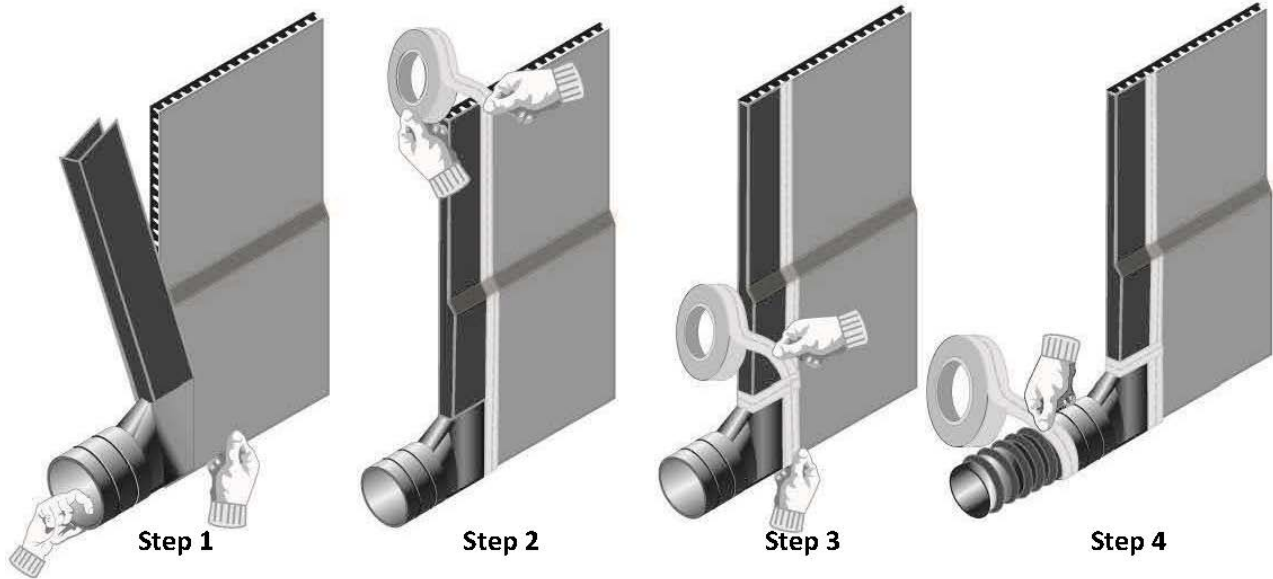
P.O. Box 755, Ennis, TX 75120-0755

Sales: (615) 217-6061 • Tech Support: (214) 515-5000 • Fax: (615) 691-5500

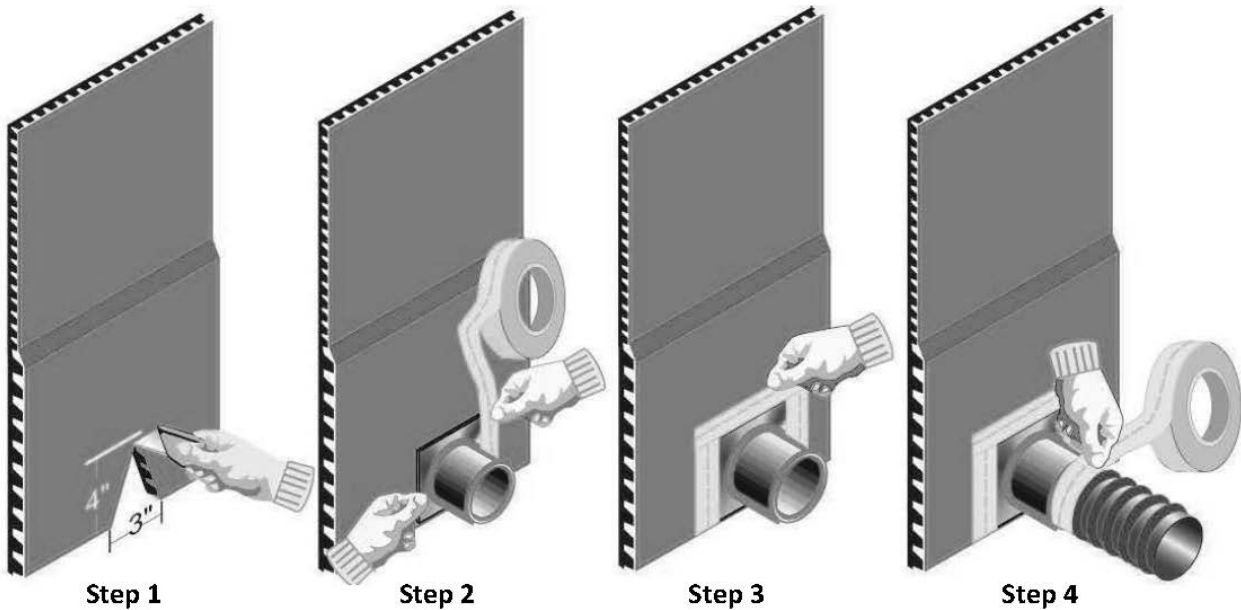
Email: archtech@polyguard.com

Website: www.polyguard.com

TOTALFLOW™ END OUTLETS



TOTALFLOW™ TEE OUTLETS



P.O. Box 755
Ennis, TX 75120
PH: (214) 515-5000
FX: (972) 875-9425

The information contained in this document is based on data and knowledge considered to be true and accurate at time of printing and is offered for the users' consideration, investigation and verification. Polyguard Products, Inc. cannot be held liable for errors made as a result of information herein. Changes and modifications can be made to this document without prior notice. No statement, recommendation or suggestion is intended for use which would infringe on patents or copyrights held by Polyguard Products, Inc. Polyflow® is a Registered Trademark of Polyguard Products, Inc.

www.Polyguard.com

