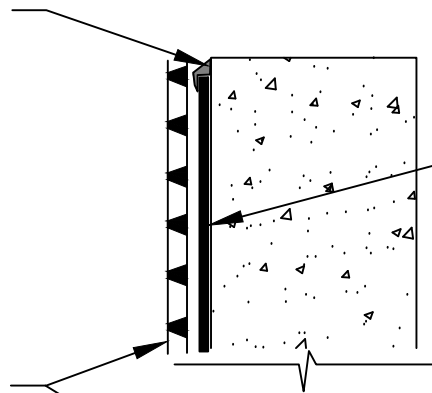
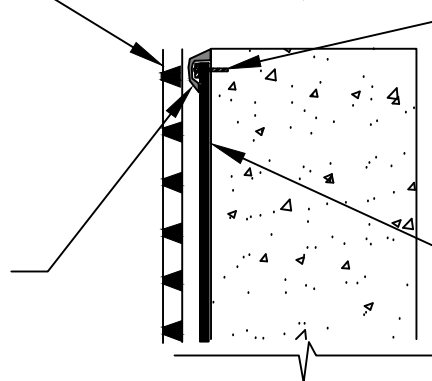


DETAIL SEALANT OR LM-95 APPLIED TO THE TOP TERMINAL EDGE



650 MEMBRANE APPLIED TO SUBSTRATE PREPARED WITH 650 LT LIQUID ADHESIVE, CALIFORNIA SEALANT OR SHURTAC LIQUID ADHESIVE AT A RATE OF 250 TO 300 SQ. FT PER GALLON

POLYFLOW 15 OR 15P MOLDED SHEET DRAIN - FABRIC FACING BACKFILL



1/8" X 1" METAL TERMINATION BAR FASTENED AT 8" SPACING AND 2" FROM EACH END - TERM BAR RECOMMENDED BY POLYGUARD

DETAIL SEALANT PW OR LM-95 APPLIED TO THE TOP OF THE TERMINATION BAR AND COVERING MINIMUM 1/8" BEYOND PERIMETER OF FASTENER HEADS

650 MEMBRANE APPLIED TO SUBSTRATE PREPARED WITH 650 LT LIQUID ADHESIVE, CALIFORNIA SEALANT OR SHURTAC LIQUID ADHESIVE AT A RATE OF 250 TO 300 SQ. FT PER GALLON



SECTION @ TOP OF WALL TERMINATION OPTIONS

SPECIAL NOTE: IF ADHESIVE IS REQUIRED FOR SEAMS OR ENDLAPS DO NOT USE SHURTAC LIQUID ADHESIVE

© POLYGUARD PRODUCTS, INC.
MATERIALS SEPARATED FOR CLARITY

The information provided is based on data and knowledge considered to be true and accurate and is offered for the users' consideration, investigation and verification, but we do not warrant the results to be obtained. Please read all data sheets, statements, recommendations or suggestions in conjunction with our conditions of sale, which apply to all goods supplied by us.	NOT TO SCALE
	EFFECTIVE DATE: 07/17/14
	SUPERCEDES: 05/15/14